

## Zazy TV

# Software Installation

# Guide for Samsung Smart TV



## Table of Contents

<b>1</b>	<b>About Smart-STB application.....</b>	<b>3</b>
<b>2</b>	<b>Installation.....</b>	<b>3</b>
<b>3</b>	<b>Zazy TV Platform.....</b>	<b>11</b>
3.1	TV.....	12
3.2	VIDEOCLUB.....	14
3.3	TV SERIES.....	15
<b>4</b>	<b>Contact Us.....</b>	<b>16</b>

## 1 About Smart-STB application

Smart-STB (Set-top app) is an Android application that can be installed on Samsung or LG Smart TVs. This app enables you to have IPTV service (i.e., Zazy TV) on a portal similar to a classic STB/MAG box with all characteristics that can be expected from a Cable TV provider.

## 2 Installation

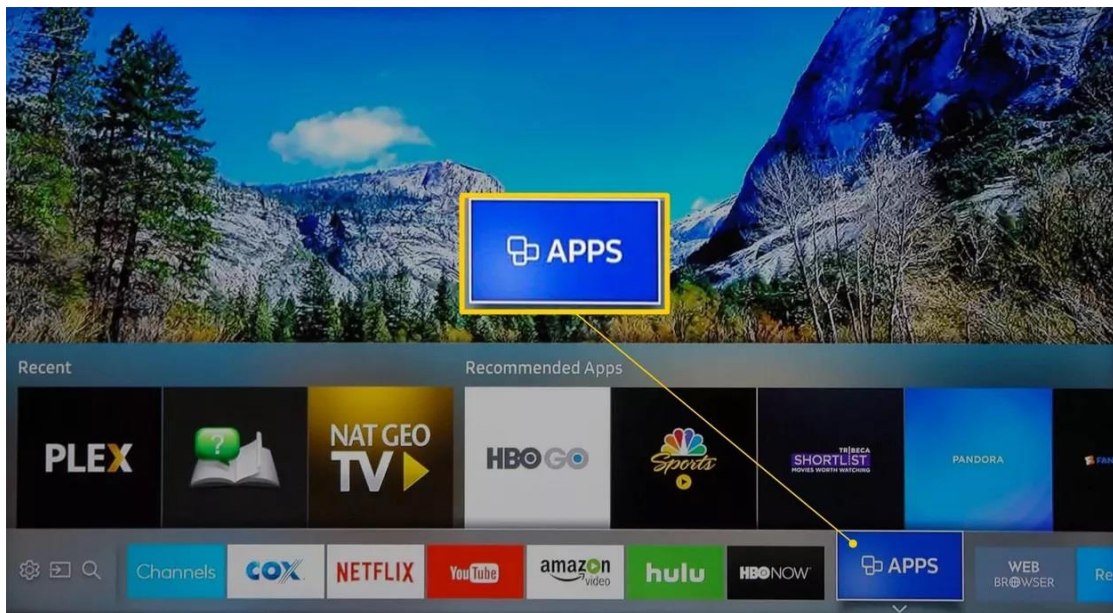


For better streaming quality experience, we highly suggest you use a network connection via Ethernet cable (also known as LAN connection) in connecting your Smart TV to your internet box or router. LAN connection provides:

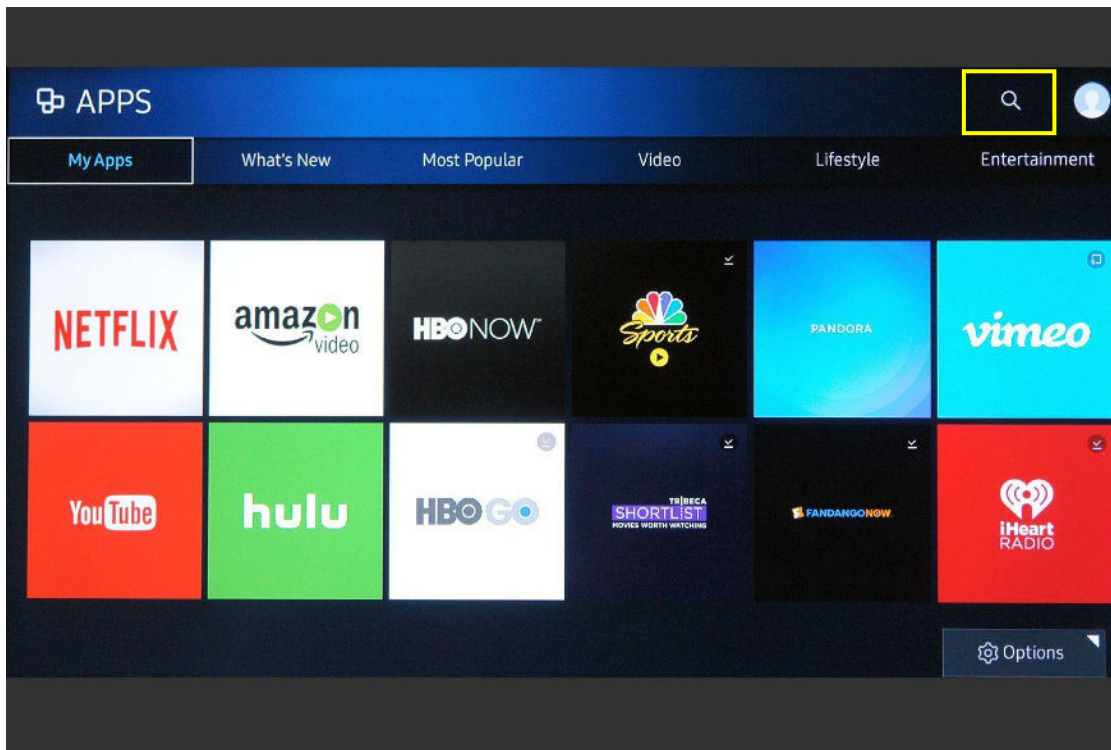
- a more stable connection
- higher bandwidth and no latency

**NOTE:** Depending on your Samsung TV model version the following images may vary.

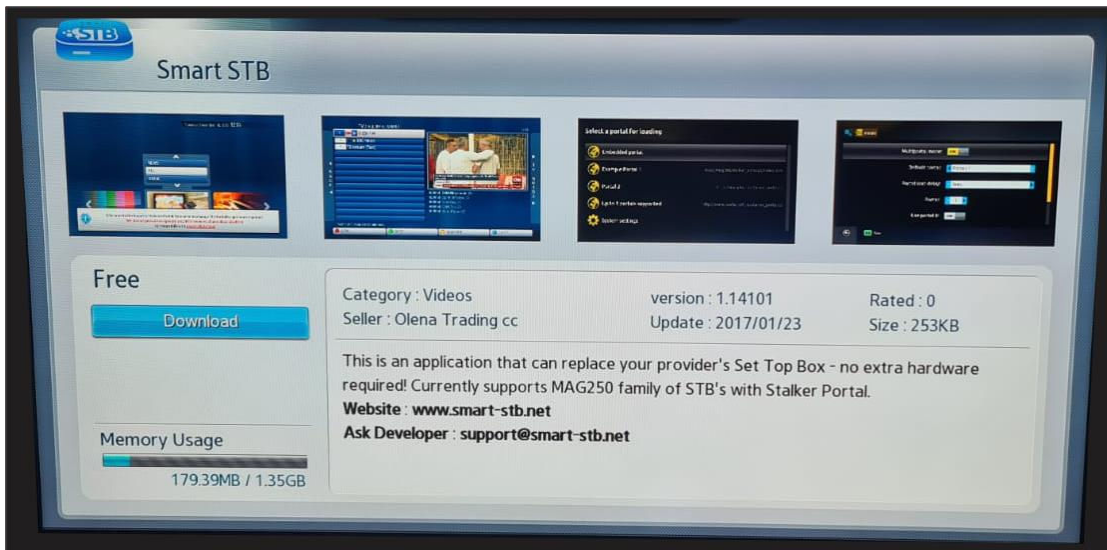
1. Turn on your Smart TV, then open the Samsung Smart Hub and click on Apps.



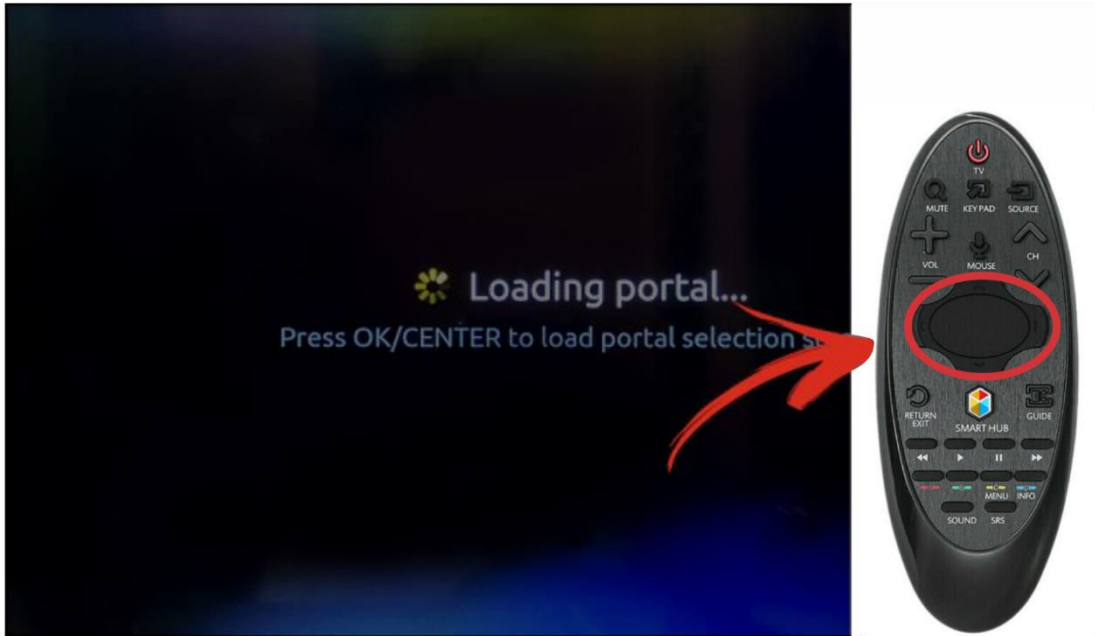
2. Go to the **Search** icon. Input "**Smart STB**" on the search bar, then hit **Search**.



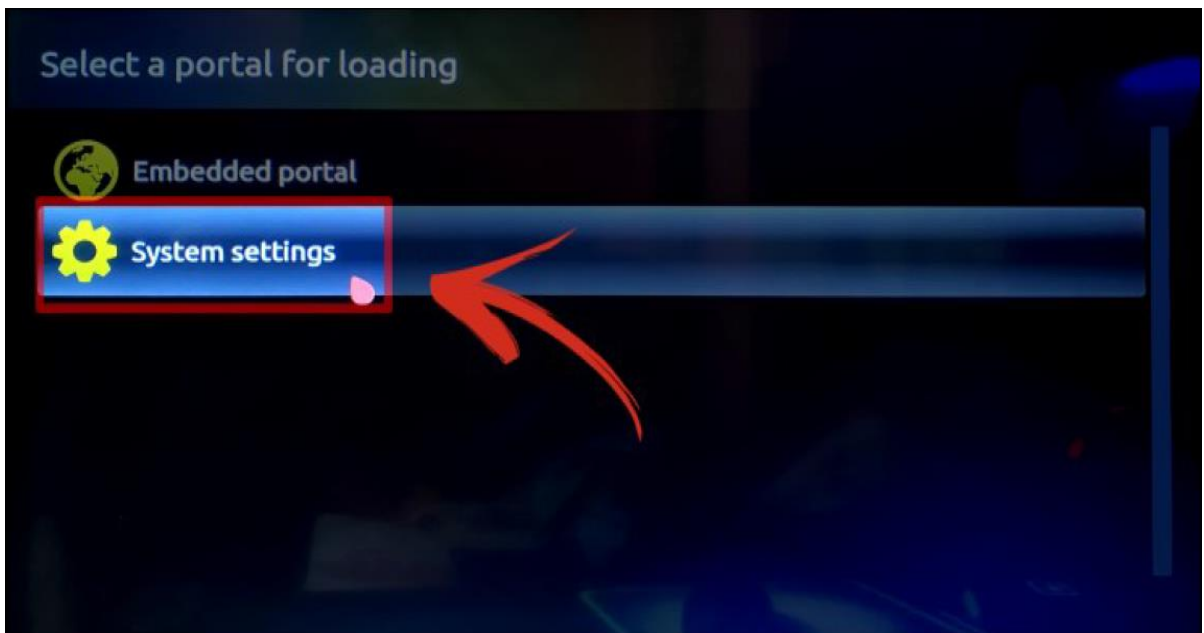
3. When the **Smart STB** app appears on the search result, click on it then hit **DOWNLOAD/INSTALL** to start the installation process. Click on **RUN** afterwards.

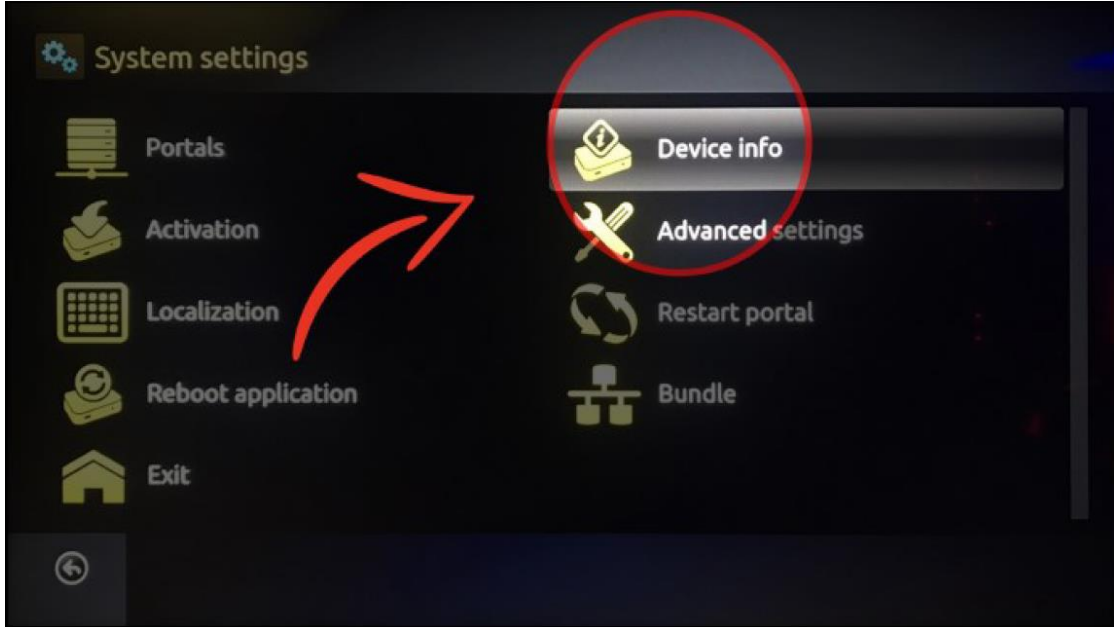


4. Once the “**Loading portal...**” screen appears, press the **OK** or **ENTER** button which is usually located at the center of your Smart TV remote control.

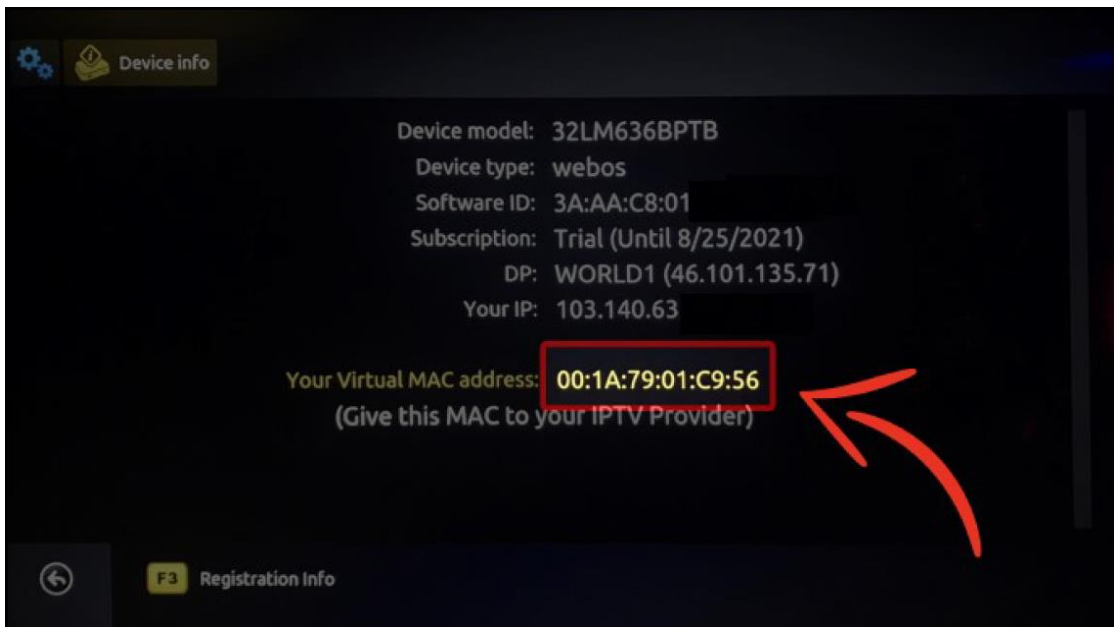


5. Go to the **System settings**, then click on the **Device info**.





6. To allow connection from your Smart TV to the Zazy TV platform, we will require you to copy your **Virtual MAC address** that must be manually entered to the Zazy TV order page.



## Zazy TV order page – MAG Address

### Additional Required Information

Select Product Type

MAG

MAG Address

Format 00:1A:79:12:34:5A

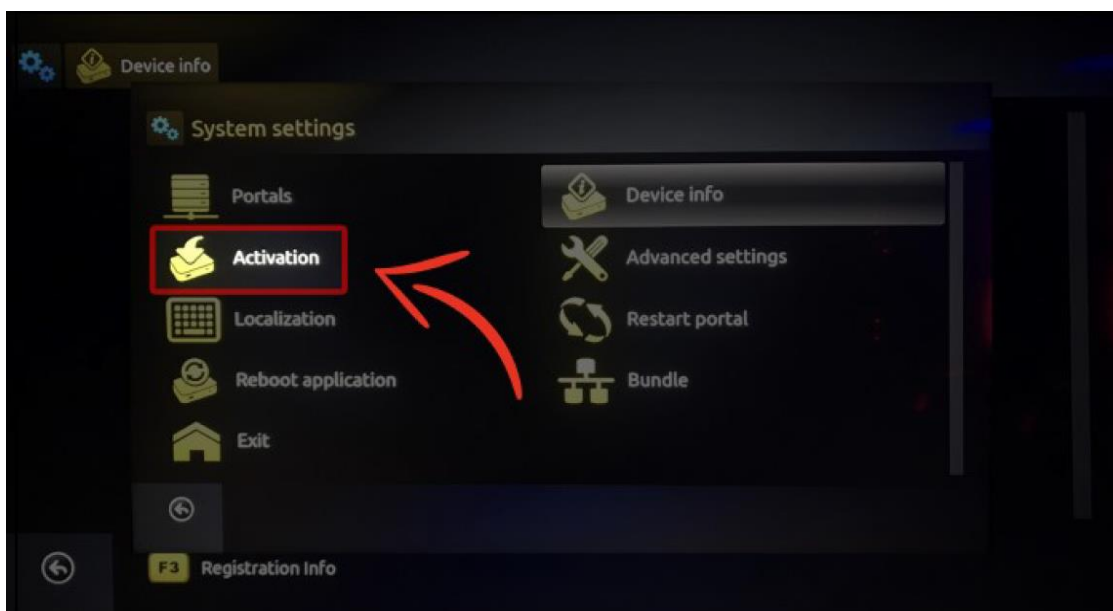
Select Bouquets

Leave empty for all bouquets

Select Bouquets

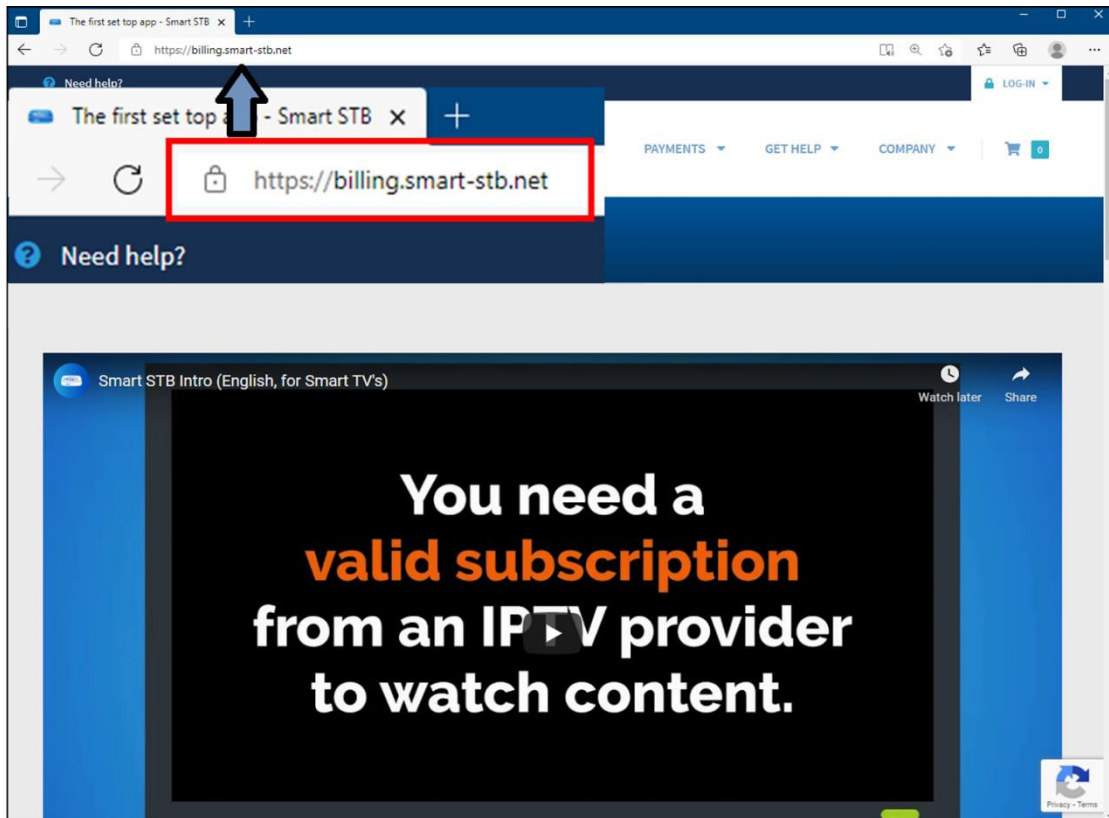
Have questions? Contact our sales team for assistance. [Click here](#)

7. Go back to the **System settings** screen by pressing the **Back** button on your Smart TV remote control, then proceed to the **Activation** menu.

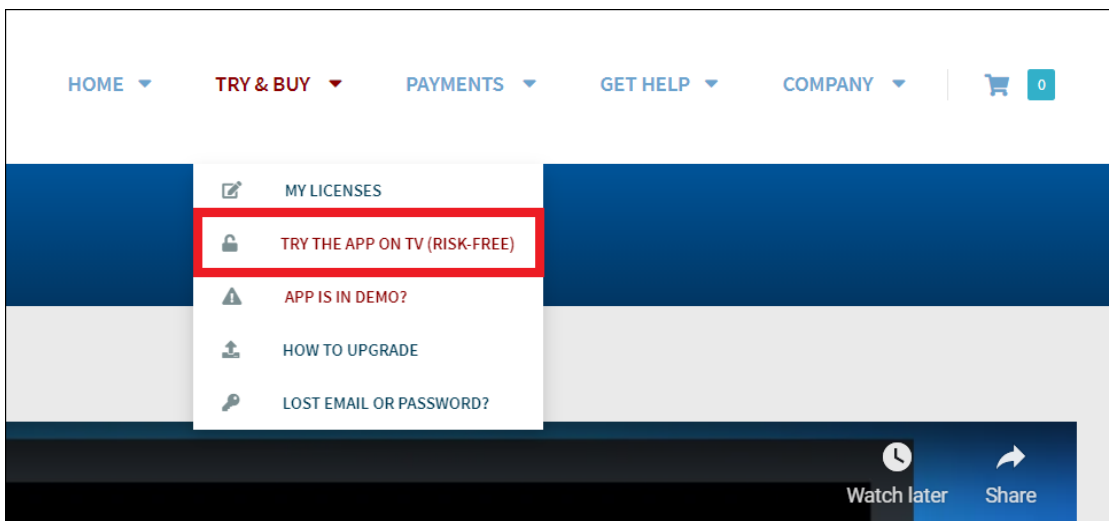


8. While leaving the **Activation** window open on your Smart TV, open a web browser on your PC or mobile device, then go to the following Smart-STB website link:

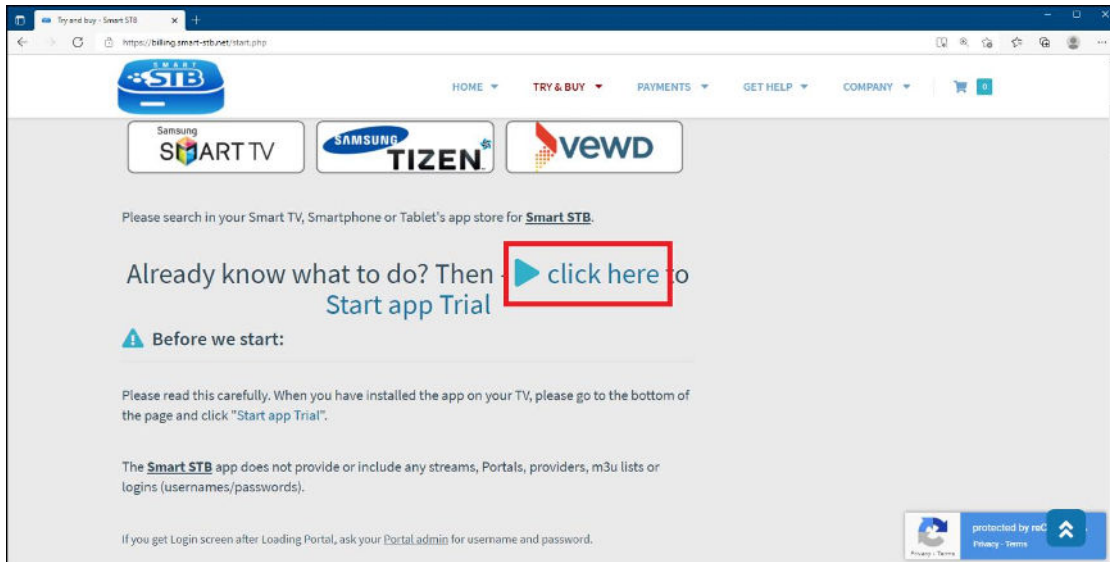
<https://billing.smart-stb.net>



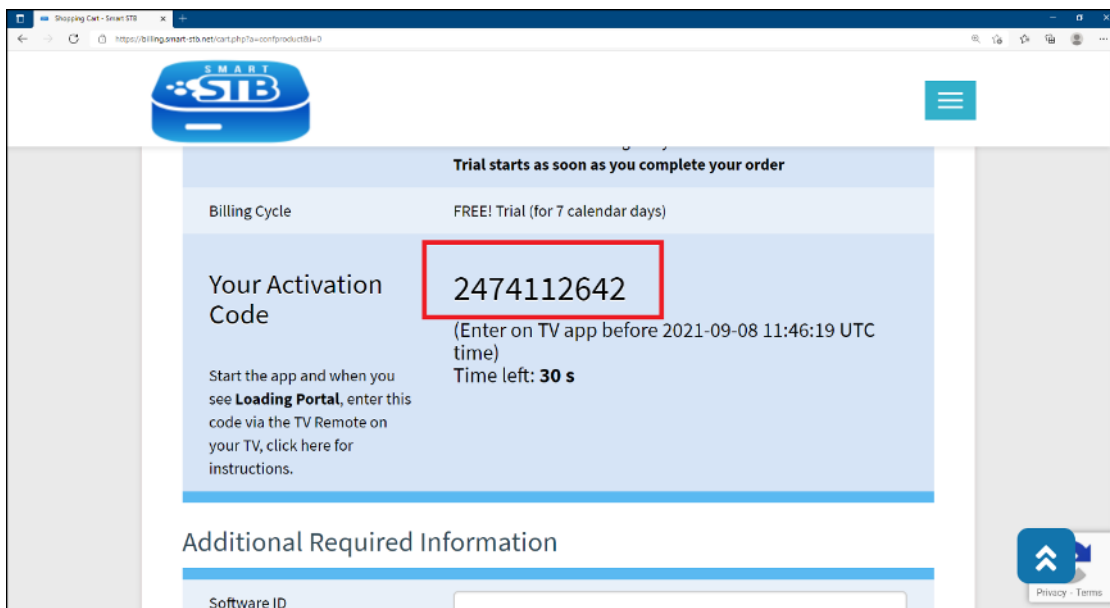
9. On the Smart-STB website, click the **TRY & BUY** drop-down button, then click **TRY THE APP ON TV (RISK-FREE)**.



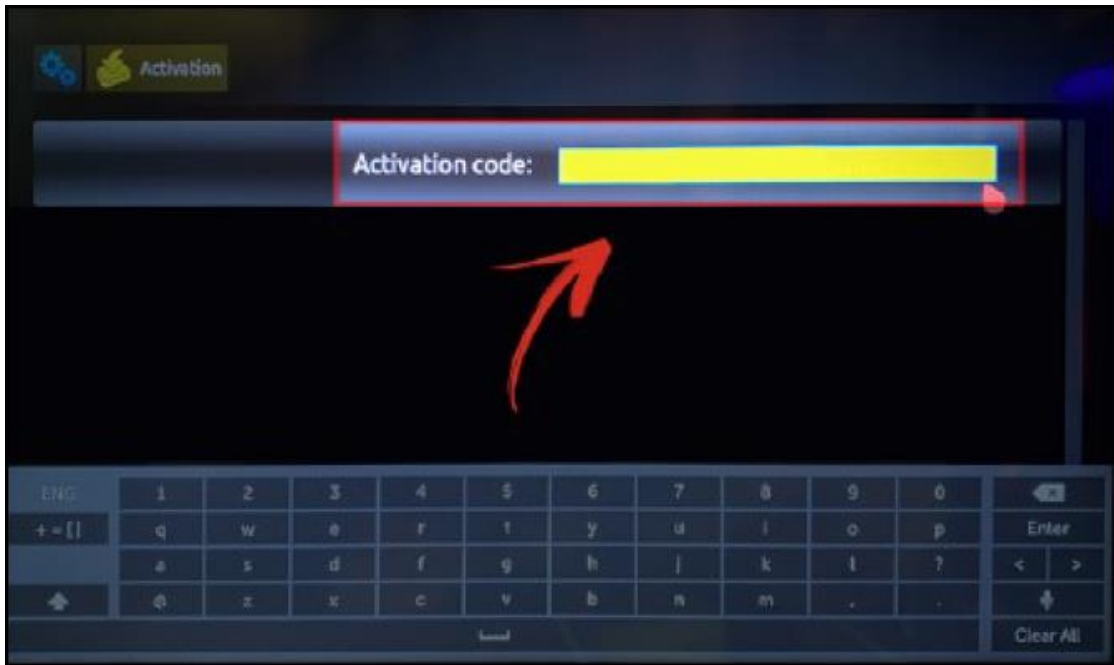
10. A new page will be displayed. Scroll-down a bit on the website until you find the **click here** button as shown below. Click this button to display your **Activation Code**.



11. You will be redirected to the Shopping Cart page of the Smart-STB website where the activation code will be displayed. Copy your **Activation Code**, then manually enter it to the **Activation code** screen of your Smart TV. Hit **OK** or **Enter** once done.

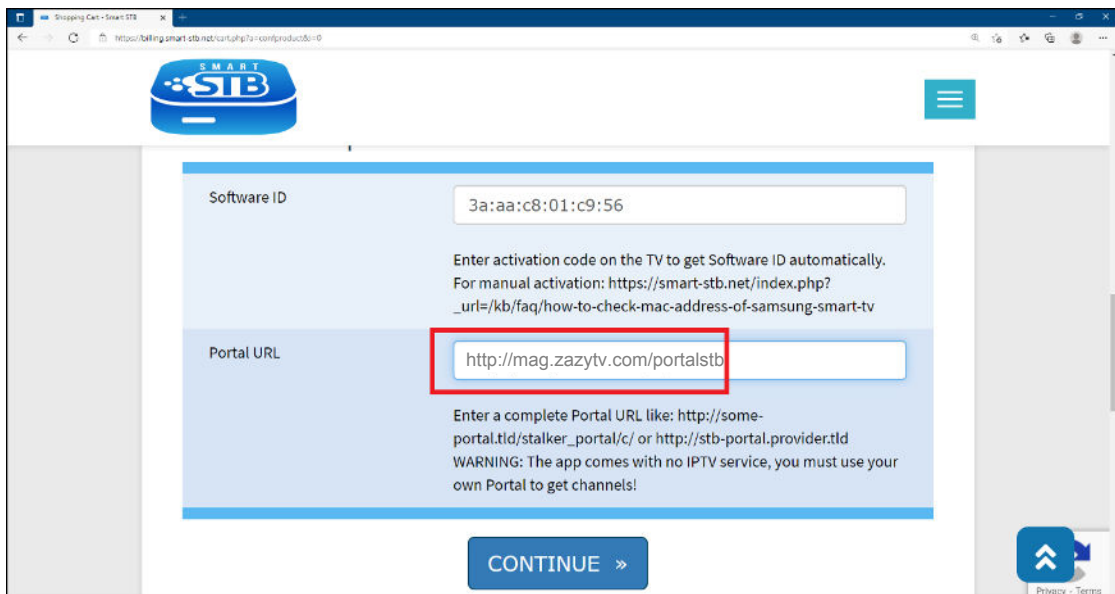


## Smart TV Activation code screen



12. Scroll-down a bit on the website until you see the following additional required information (i.e., Software ID and Portal URL). Once you enter the **Activation code** on your Smart TV from the previous step (*Step 12*), the **Software ID** will be automatically indicated here. For the **Portal URL**, enter the following Zazy TV website link, then click the **CONTINUE** button to proceed:

<http://mag.zazytv.com/portalstb>



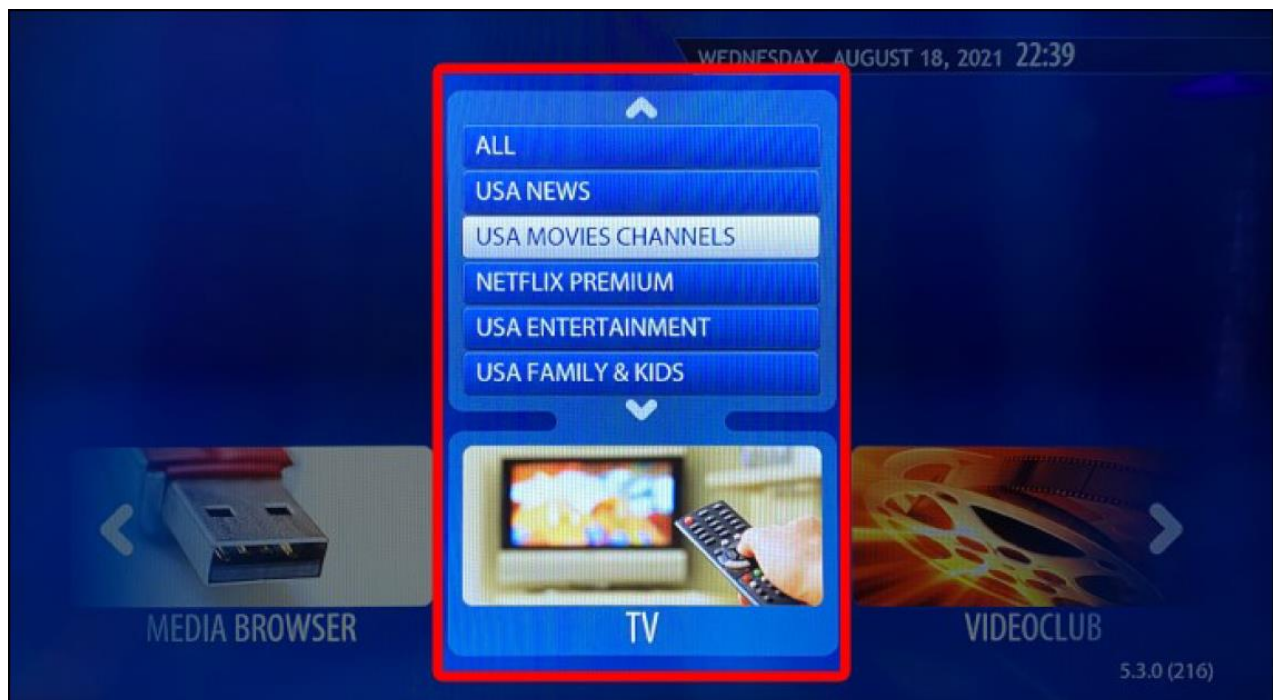


If the Software ID did not automatically appear, please refer to the following FAQ Article:

<https://smart-stb.net/index.php?url=/kb/fag/how-to-check-mac-address-of-samsung-smart-tv>

13. After clicking the **CONTINUE** button, you will be prompted to register at the **Smart-STB** website. Please ensure that all information entered is correct.
14. After you have successfully completed the form on the **Smart-STB website**, proceed to your Smart TV, then reload the portal. Wait until the process is complete.
15. Once the process is complete, your Smart TV will be connected to the Zazy TV platform.

## 3 Zazy TV Platform

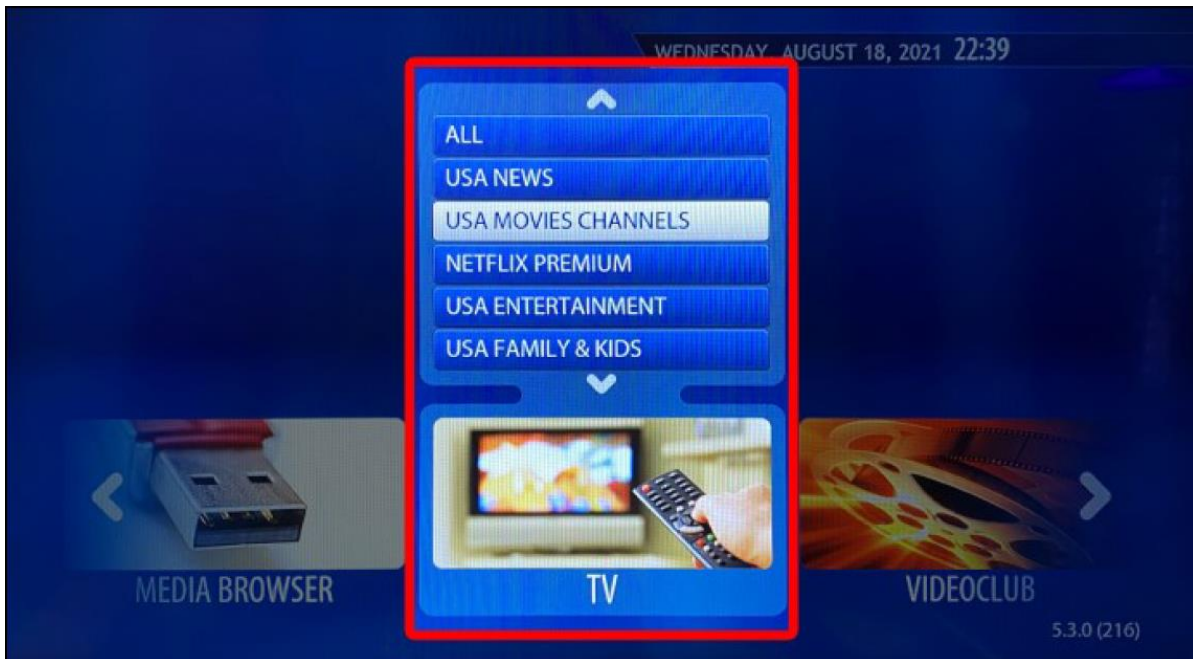


The Zazy TV consists of the following features:

- ▶ TV
- ▶ Videoclub
- ▶ TV Series
- ▶ Radio

## 3.1 TV

The TV section provides you the category list of all the available TV channels, movies channels, etc. To watch a TV channel, select from the category list, then click on a channel that you would like to watch.



Example of a TV channel playing

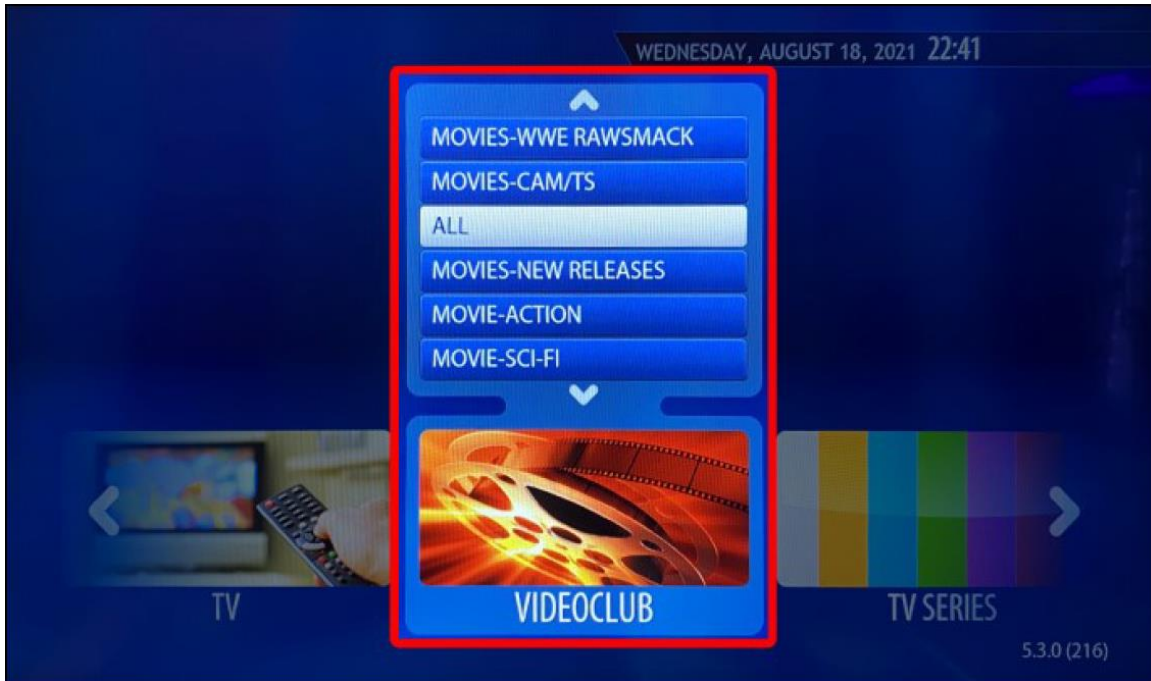


Some TV channels has an EPG (Electronic Program Guide) available. If a selected TV channel includes an EPG, it will be displayed under the video player.

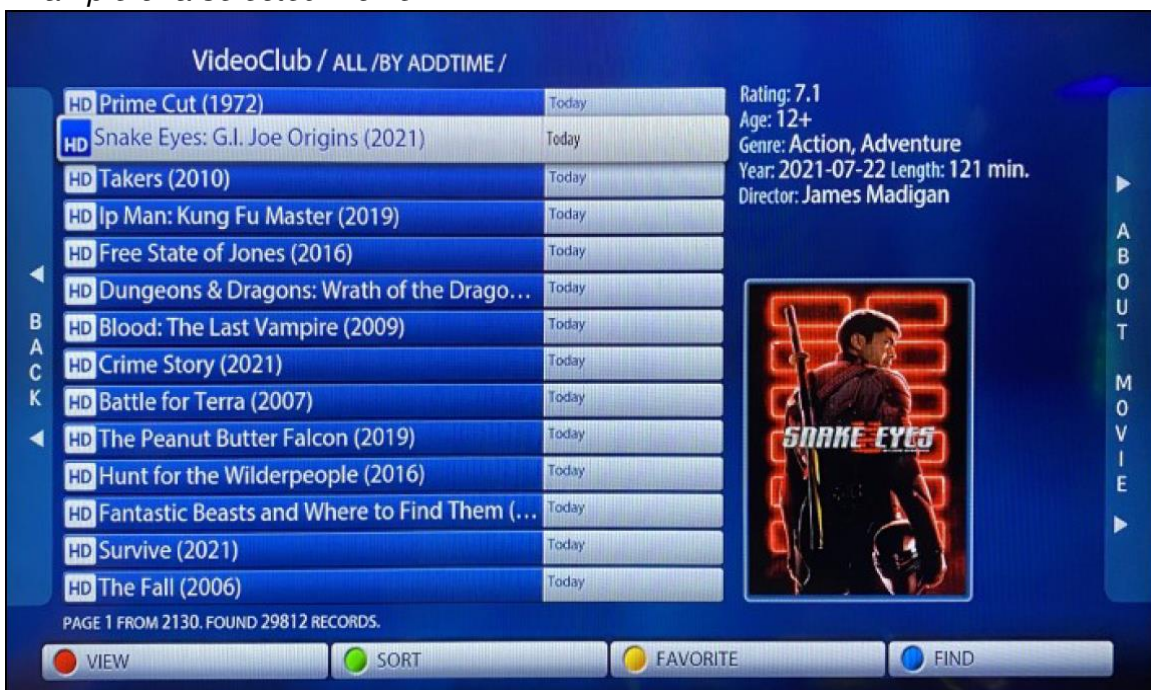


## 3.2 VIDEOCLUB

The Videoclub section contains the category list of all the available movie genres (i.e., action, sci-fi, etc.), new releases, etc. To watch a movie, select from the category list, then click on a specific movie that you would like to watch.



*Example of a selected movie*



## 3.3 TV SERIES

The TV Series section contains the category list of all the available TV series by genre (i.e., documentary, drama, family etc.). To watch a series, select from the category list, then click on a specific series that you would like to watch.



Example of a selected TV series



## 4 Contact Us

For inquiries or concerns about your account, you may submit a support ticket to the link below:

<https://clients.zazytv.com/clientarea.php>